



The Centers for Disease Control and Prevention's Evidence-Based Activities to Increase Health Impact and Health Value

Shawna L. Mercer, M.Sc., Ph.D.
Director

**The Guide to Community Preventive Services
National Center for Health Marketing
Centers for Disease Control and Prevention (CDC)**

SAFER • HEALTHIER • PEOPLE™

CDC and “Comparative Effectiveness”

- Comparative effectiveness is typically considered within the frame of healthcare
- It is indeed essential to ensure that we can identify the most effective drugs, treatments, and procedures for those with disease, injury, or disability
- But improving health will require additional policy and programmatic actions across the spectrum of issues that can influence health



Recent Health Challenges

- Many Americans are unsatisfied with their health and face rising out-of-pocket expenses for healthcare
- Obesity is growing at alarming rates
- Scares over tainted spinach and tomatoes have increased concerns about food safety



Recent Health Challenges (cont'd)

- Use of influenza vaccines in high risk groups is still limited
- Preparations for and clean up after hurricanes have surfaced challenges in cleaning up mold
- Asthma rates in inner city children are high



Many policies can support health

■ Policies within the traditional health system

◆ Health care policies

- Health care systems that enable physicians to provide more clinical preventive services



◆ Public health policies

- Smoke free schools



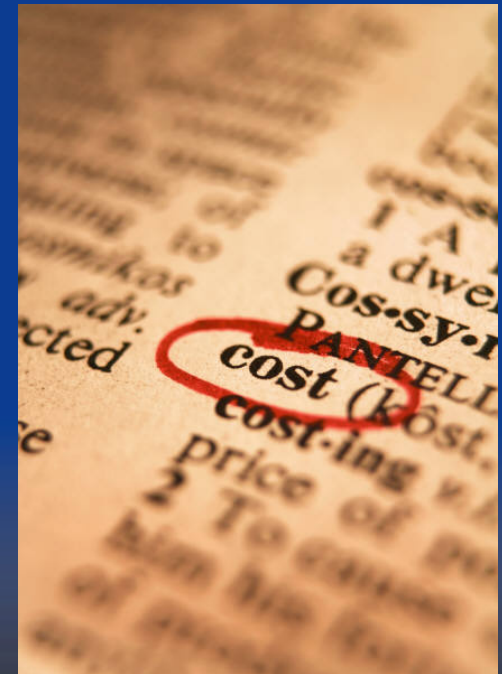
Many policies can support health (cont'd)

- **Policies in other sectors**
 - ◆ That are directly focused on improving or protecting health
 - Seatbelt laws, banning lead paint in toys
 - ◆ With implications for improving, protecting, or harming health
 - Street design, zoning regulations



Why is it particularly important to identify effective policies and programs for preventing disease, injury, and disability?

- Of the \$2.3 trillion that the United States spends on health per year, only about 5% goes to prevent disease, injury, and disability
- How can we achieve the greatest health impact and health value with the available resources?



Why is CDC particularly suited to strengthening the evidence-base for health?



CDC's Vision and Mission



■ Vision

Health Protection...Health Equity

■ Mission

Collaborating to create the expertise, information, and tools that people and communities need to protect their health – through

- Health promotion
- Prevention of disease, injury and disability
- Preparedness for new health threats



How does CDC accomplish its mission?

By collaborating with partners to:

- ◆ Monitor health
- ◆ Detect and investigate health problems
- ◆ Conduct research to enhance prevention
- ◆ Develop and advocate sound public health policies
- ◆ Implement prevention strategies
- ◆ Promote healthy behaviors
- ◆ Foster safe and healthful environments
- ◆ Provide leadership and training



CDC's broad mandate holds value for strengthening the evidence-base

- CDC has deep expertise and many years of experience in:
 - ◆ **Research**
 - Funding extramural
 - Conducting intramural
 - ◆ Providing **service** to states, communities, health providers, other stakeholders:
 - Funding public health programs
 - Developing programs and policies
 - Providing technical assistance
 - ◆ Developing, and supporting the development of **evidence-based recommendations** for prevention, health protection, health promotion, and healthcare



And the value is...

- CDC's first-hand service roles enables it to:
 - ◆ Identify service inadequacies and gaps
 - ◆ Target research to address those needs
 - ◆ Collect common indicators of effectiveness to facilitate comparison of research outcomes
 - ◆ Conduct or support rigorous evaluations that compare the effectiveness of its grantees' real-world programs
 - ◆ Provide technically credible information to support decision making about policy and practice
 - ◆ Use its extensive surveillance systems, health surveys, and vital statistics to monitor progress

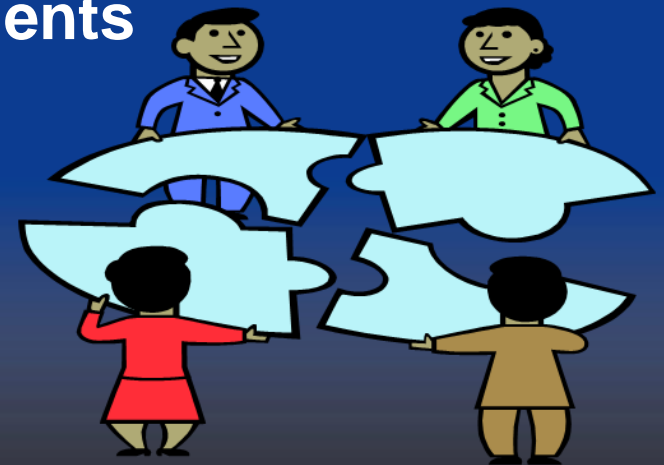


National Center for Health Statistics...*Monitoring the Nation's Health*



CDC's broad mandate holds value for strengthening the evidence-base

- CDC has forged very strong partnerships and collaborates with its partners in all its major activities
 - ◆ Schools of public health and medicine
 - ◆ Health-related organizations
 - ◆ Health professional organizations
 - ◆ State and local health departments
 - ◆ Not-for-profit sector
 - ◆ Schools
 - ◆ Employers
 - ◆ Faith-based groups
 - ◆ Other federal agencies



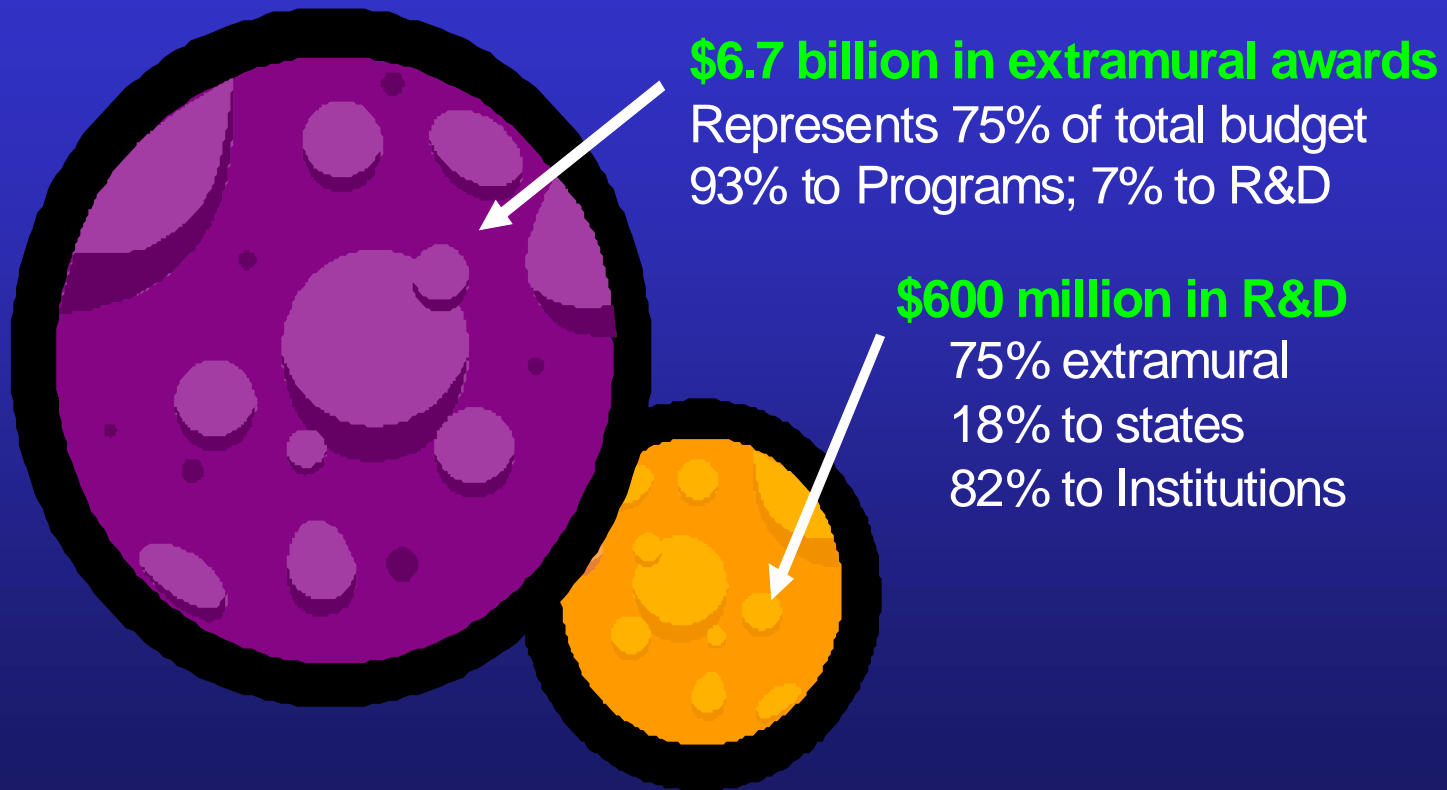
And the value is...

- CDC-developed and CDC-supported evidence-based recommendations have been well-vetted by a wide variety of stakeholders



CDC's Research Portfolio

CDC Resources in Round Numbers for FY2007



“Comparative effectiveness” research at CDC includes:

- Comparing vaccines to each other
- Evaluating anti-tuberculosis drugs
- Comparing approaches to establishing and maintaining:
 - ◆ Healthy behaviors
 - ◆ Healthy environments
 - ◆ Strong health systems and systems that influence health



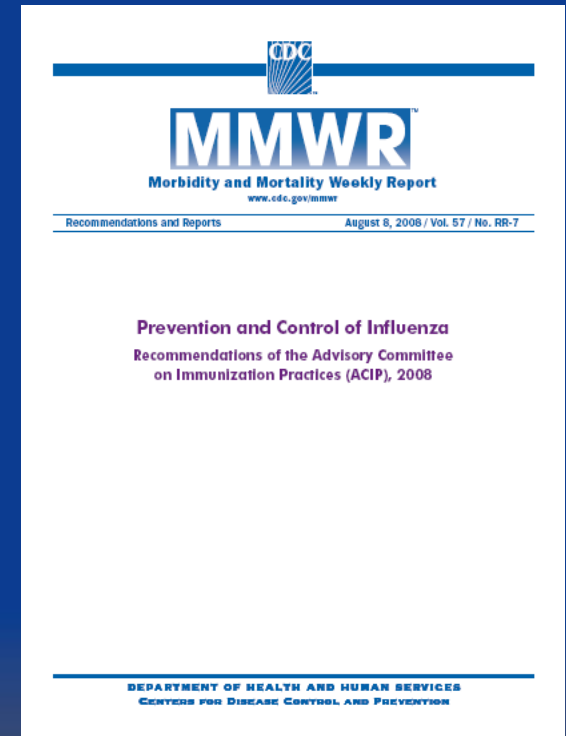
Evidence-based recommendations developed or supported by CDC include...



Advisory Committee on Immunization Practices (ACIP)

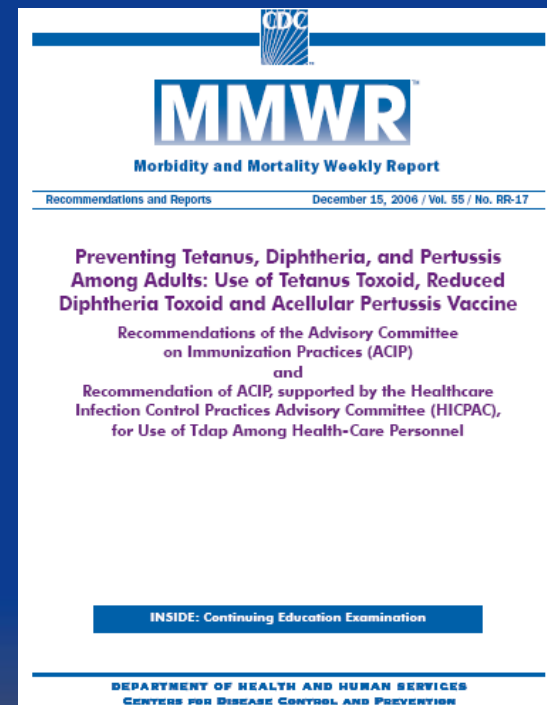
- 15 experts in fields associated with immunization
- Selected by the Secretary of HHS
- To provide advice and guidance to the Secretary, Assistant Secretary, and CDC on the control of vaccine-preventable diseases
- ACIP develops recommendations for routine administration of vaccines to children and adults, including which vaccines should be administered and how

<http://www.cdc.gov/vaccines/recs/acip/>



Healthcare Infection Control Practices Advisory Committee (HICPAC)

- 14 external infection control experts
- Recommended by CDC; appointed by the Secretary of HHS
- To provide advice and guidance to CDC and the Secretary regarding the practice of healthcare infection control, strategies for surveillance and prevention and control of healthcare associated infections in United States healthcare facilities
- HICPAC develops recommendations for preventing and controlling healthcare associated infections



<http://www.cdc.gov/ncidod/dhqp/hicpac.html>





DEBI



1. HIV/AIDS Prevention Research Synthesis (PRS)

Conducts systematic reviews to identify evidence-based interventions

2. Replicating Effective Programs (REP)

Works with researchers and community-based partners to translate evidence-based recommendations from PRS into everyday language and develop user-friendly packages of materials

3. Diffusion of Effective Behavioral Interventions (DEBI)

Coordinates dissemination of the packaged interventions to communities



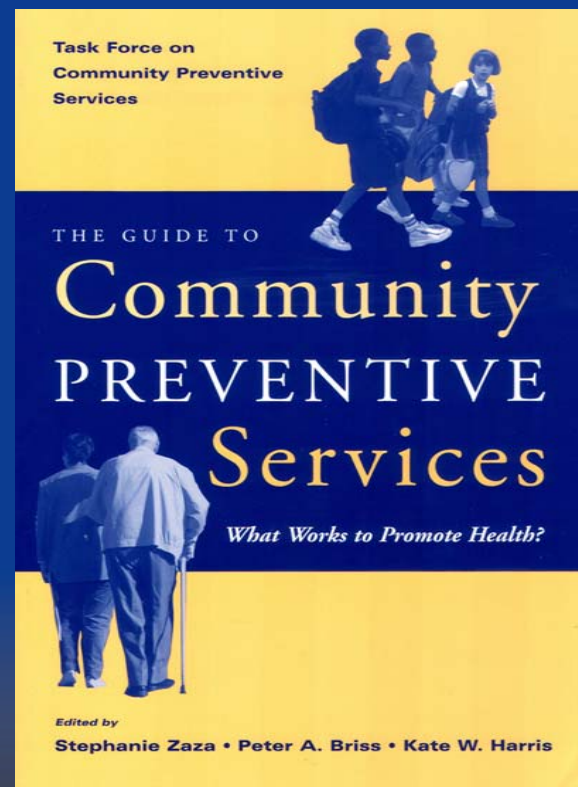
http://www.cdc.gov/hiv/topics/research/prs/prs_rep_debi.htm





The Community Guide is:

- **Systematic reviews** of the available evidence on the effectiveness of population-based public health interventions
- Formulated by a team of renowned researchers, public health practitioners, representatives of health organizations
- Concise, carefully-considered **recommendations for policy and practice**
- Assessment of **economic efficiency**
- Identification of **research gaps**



www.thecommunityguide.org



Community Guide: Recommendations are Made by the...

Task Force on Community Preventive Services

- ◆ Nonfederal, independent, rotating
- ◆ Internationally renowned experts in public health research, practice, policy
- ◆ Appointed by CDC director
- ◆ Established by HHS as resource for public health
- ◆ Not a Federal Advisory Committee

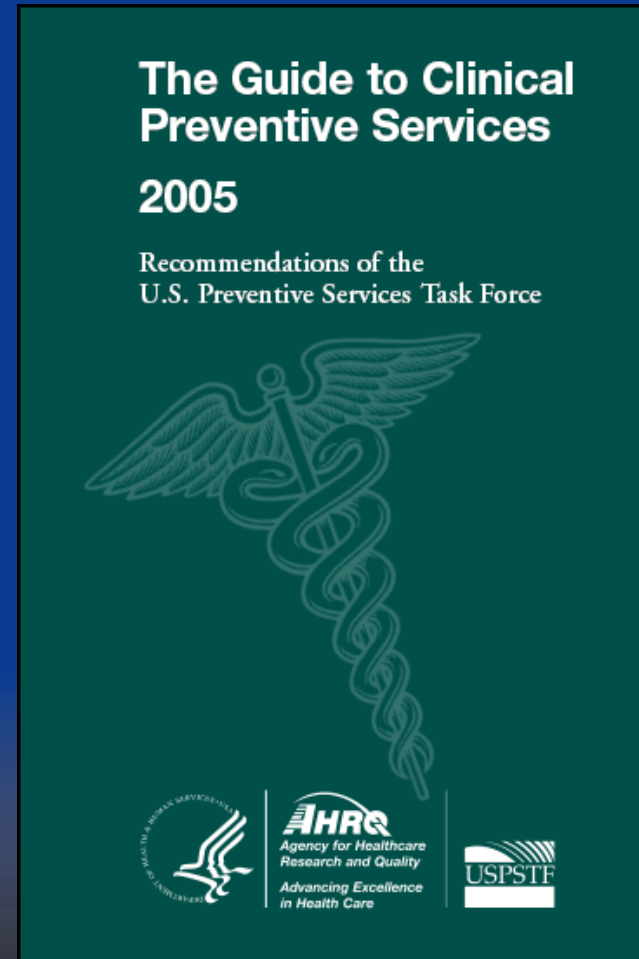
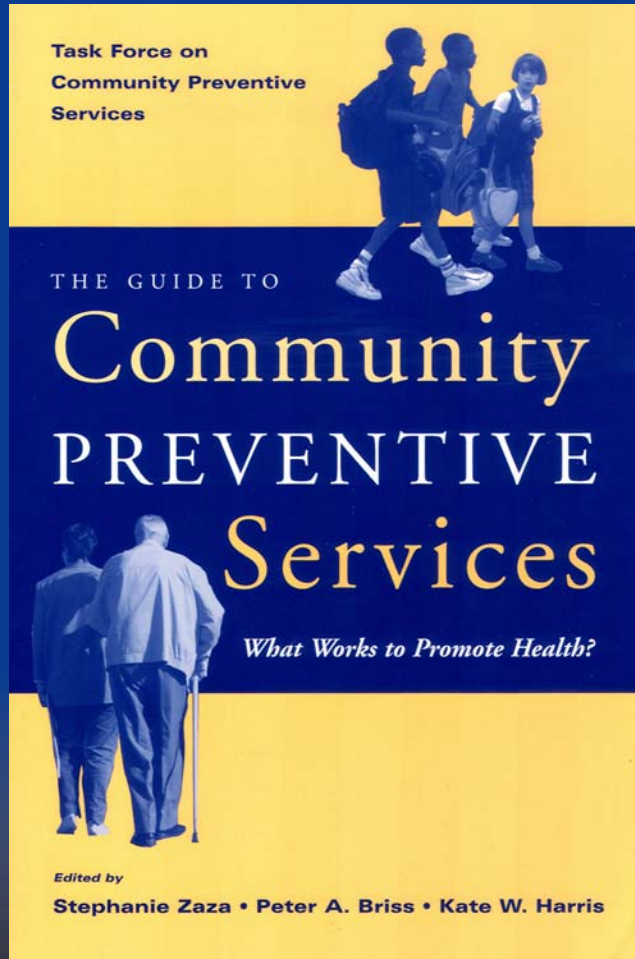


With input from

- ◆ Coordination Team for the systematic review
- ◆ 25+ Official Liaison Organizations



The *Clinical Guide* and *Community Guide* Are Complementary



The Clinical and Community Guides Are Complementary

Individual level
Clinical settings
Delivered by healthcare providers
Screening, Counseling, etc.

Clinical Guide
Recommendations

Group level
Health system changes
Insurance/benefits coverage
Access to/provision of services
Community, population-based
Informational
(Group Education, Media)
Behavioral, Social
Environmental & Policy Change

Community Guide
Recommendations



>210 Task Force Recommendations

The Environment

Social Environment

Settings

States

Worksites

Healthcare system

Communities

Schools

Organizations

Risk Behaviors

Specific Conditions

Tobacco Use

Vaccine-Preventable Disease

Alcohol Abuse/Misuse

Pregnancy Outcomes

Other Substance Abuse

Violence

Poor Nutrition

Motor Vehicle Injuries

Inadequate Physical Activity

Depression

Unhealthy Sexual Behaviors

Cancer

Diabetes

Oral Health

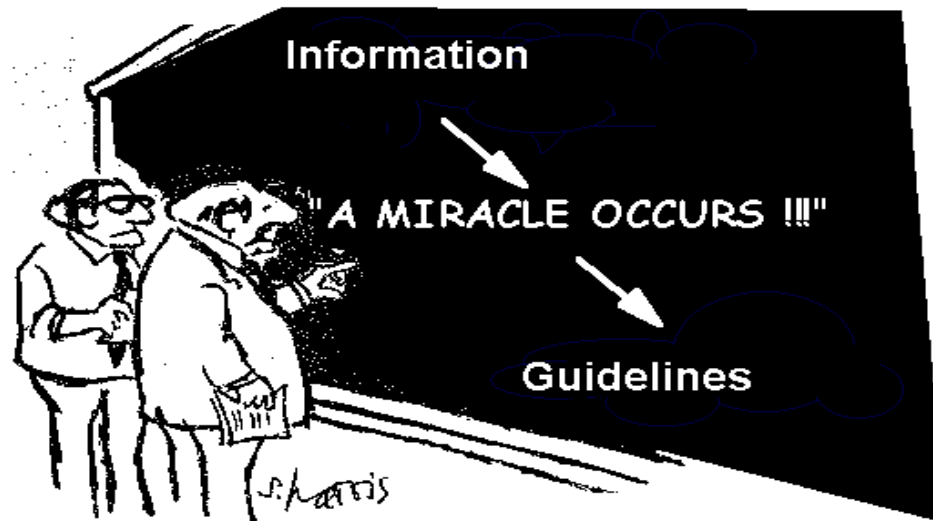
Obesity

The CG Seeks to Answer Key Questions about Interventions

- Do they work?
- How well?
- For whom?
- Under what circumstances are they appropriate?
- What do they cost?
- Do they provide value?
- Are there barriers to their use?
- Are there any harms?
- Are there any unanticipated outcomes?



Transparency (A Minor Detail!)



I think you should be more explicit here in step two."

CDC's Quality of Evidence Workgroup

- Developed standards for CDC's recommendations and guidelines to enhance:
 - ◆ Transparency in:
 - Reporting the evidence considered
 - The link between the evidence and the recommendations
 - ◆ Validity
 - ◆ Credibility
 - ◆ Trustworthiness



For More Information

Shawna Mercer
SMercer@cdc.gov

The findings and conclusions in this presentation are those of the presenter and do not necessarily represent the views of CDC.

