

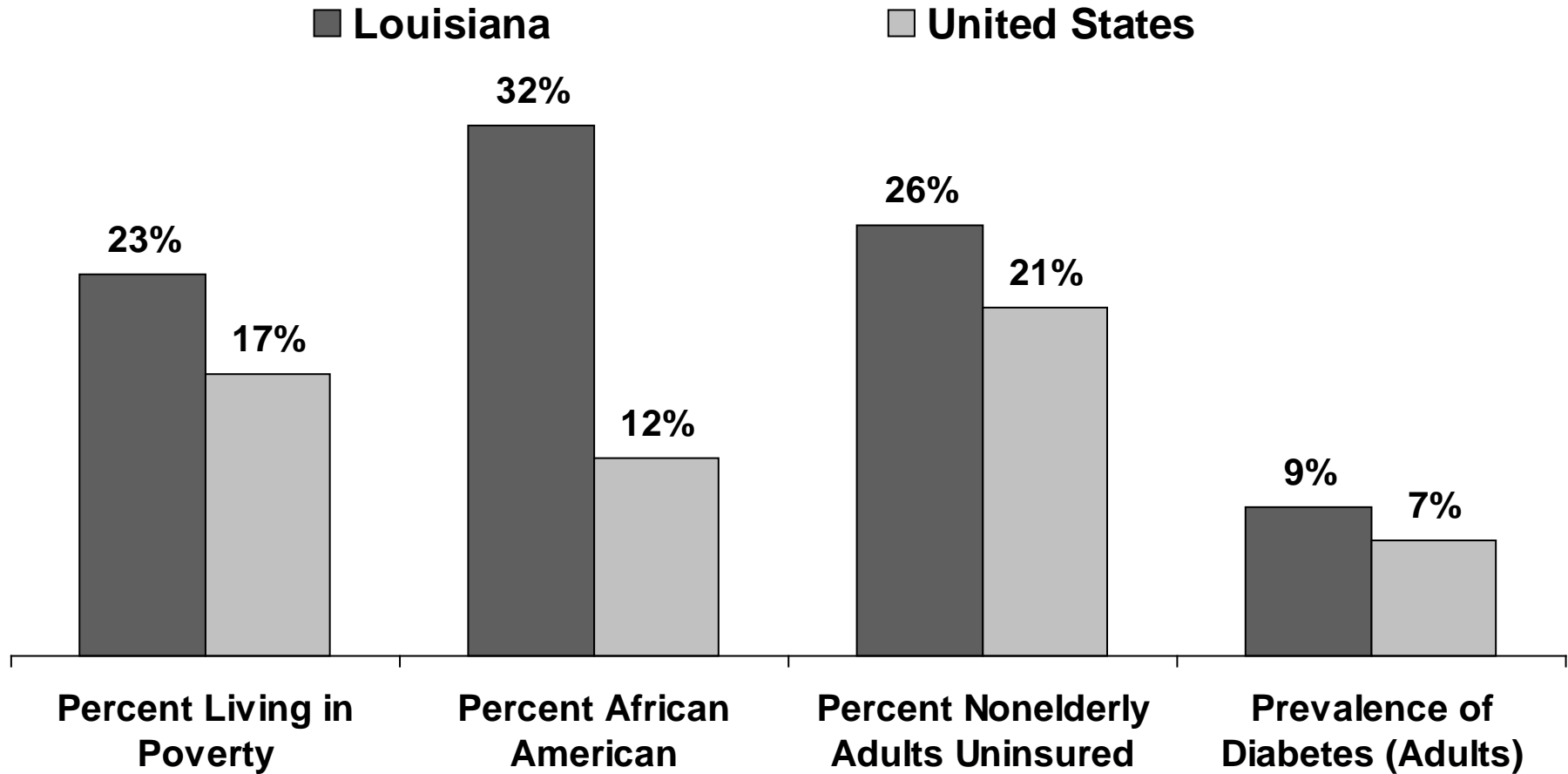
New Orleans Health Care System: Review and Outlook Post Hurricane Katrina

**Diane Rowland, Sc.D.
Executive Vice President,
Henry J. Kaiser Family Foundation
and
Executive Director,
Kaiser Commission on Medicaid and the Uninsured**

for

**National Health Policy Forum
Washington, DC
May 14, 2009**

Pre-Katrina Louisiana Compared to the U.S.

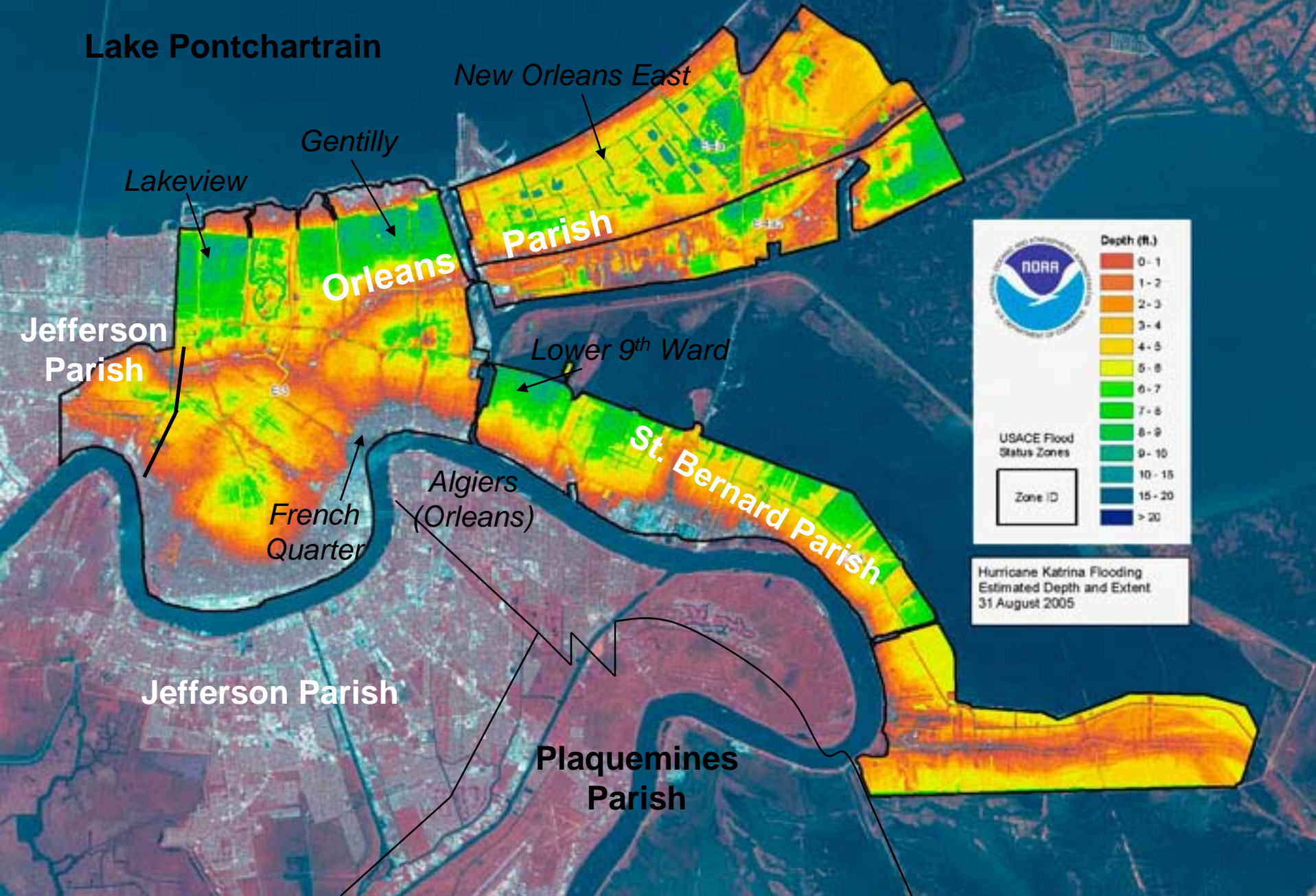


SOURCE: www.statehealthfacts.org. Data is from the Census Bureau's March 2005 and 2006 Current Beneficiary Survey.

Health Care Access in Pre-Katrina New Orleans

- High percentage uninsured
 - Low rates of employer sponsored insurance
 - Restricted Medicaid eligibility for adults
- State and federal funding to support care to the uninsured concentrated in the LSU-operated Charity Hospital system
- Care delivery characterized by a “two-tier” system
 - 1) Uninsured: primarily served by safety-net hospitals (Medical Center of Louisiana at New Orleans/MCLNO); limited access to physicians’ offices and other community clinics
 - 2) Insured: primarily used other hospitals; broader access to care in the community
- Specialty services offered to uninsured through MCLNO (aka Charity Hospital) as a teaching hospital

Katrina: Aug. 29, 2005



Devastation Post-Katrina

Lives lost	1,464	
People displaced	900,000	
Orleans household population [†]	158,353	(-64%)
Jobs lost*	183,800	(-30%)
Housing with major/severe damage	204,500	
Debris generated	22 million tons	
Staffed inpatient beds	453	(-80%)
Physicians	1,200	(-55%)

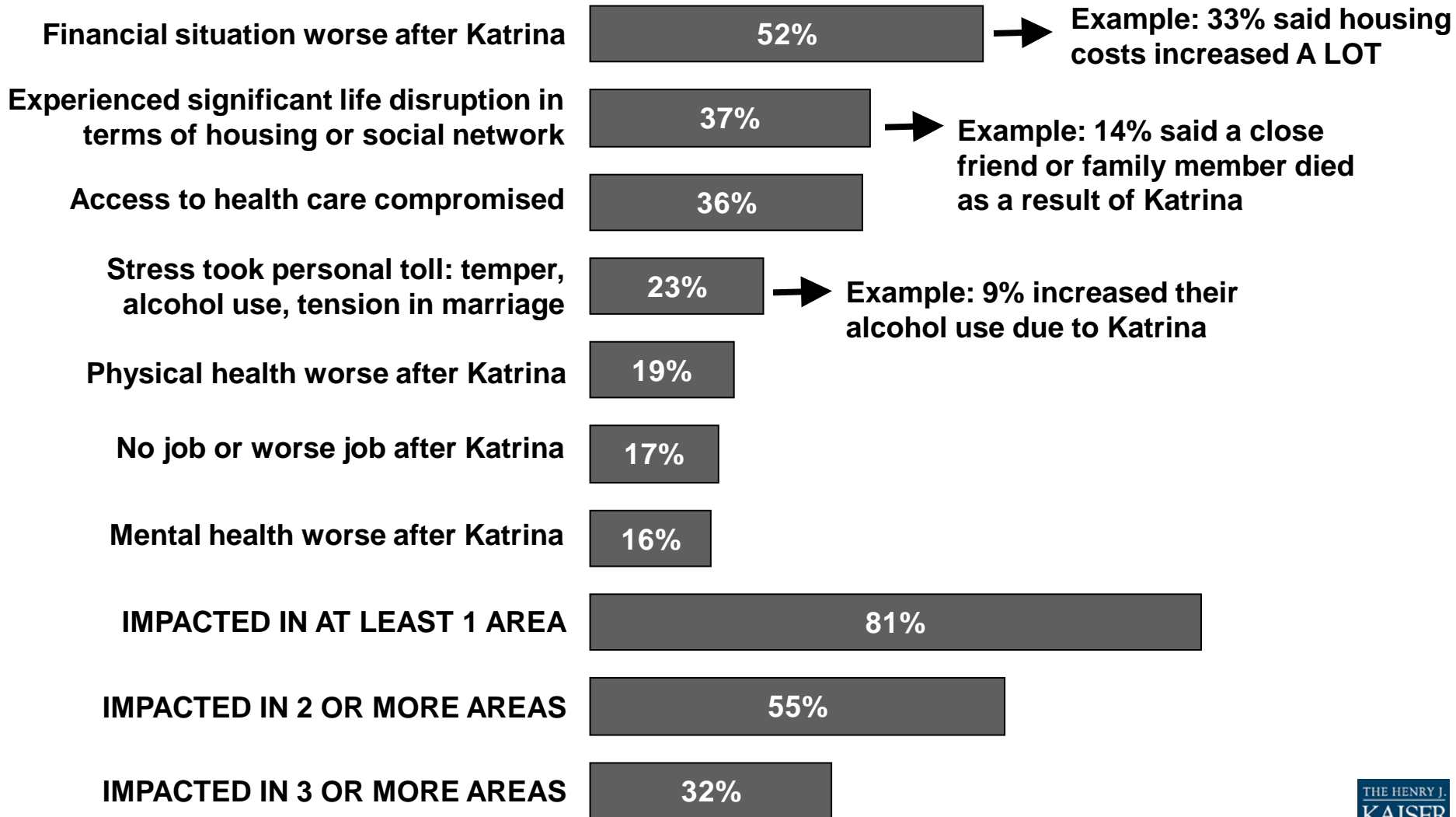
[†] Population as of January 2006; *Jobs lost as of June 2006.

Note: Loss of inpatient beds includes closure of most acute care hospitals, including Charity Hospital

SOURCE: Louisiana Recovery Authority, *Hurricane Katrina Anniversary Data for Louisiana*, August 2006, and Louisiana Department of Health and Hospitals, *Hurricane Recovery Plans*, April 2006 report.

New Orleans: One Year Post-Katrina, 2006

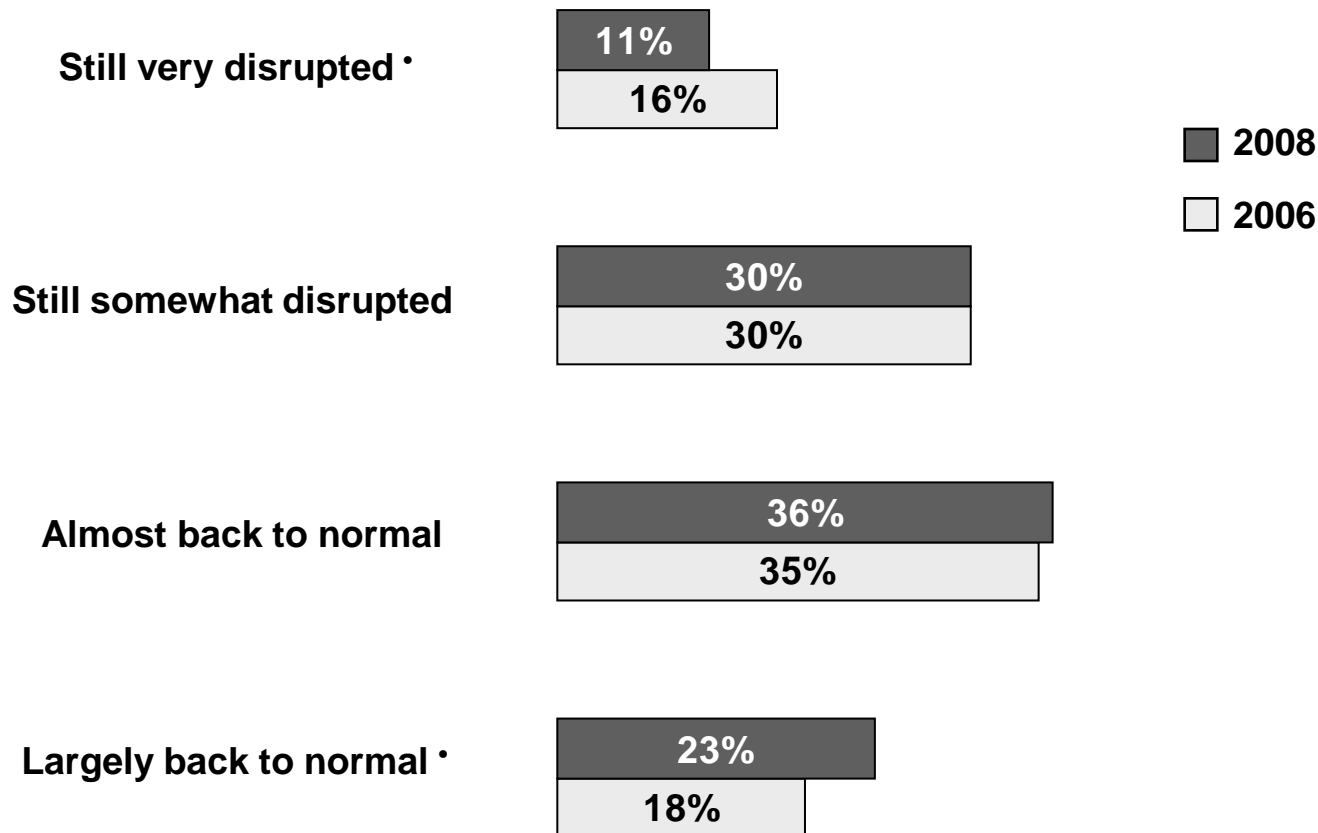
Percent of residents who reported having an impact in each of the following areas after Hurricane Katrina:



New Orleans: Three Years Post-Katrina, 2008

Which of the following best describes your personal situation in terms of recovering from Hurricane Katrina? Would you say that your day to day life is largely back to normal, almost back to normal, still somewhat disrupted or still very disrupted?

Based on those who lived in the New Orleans area at the time Hurricane Katrina hit.



Note: The percentage who did not give an answer is not shown.

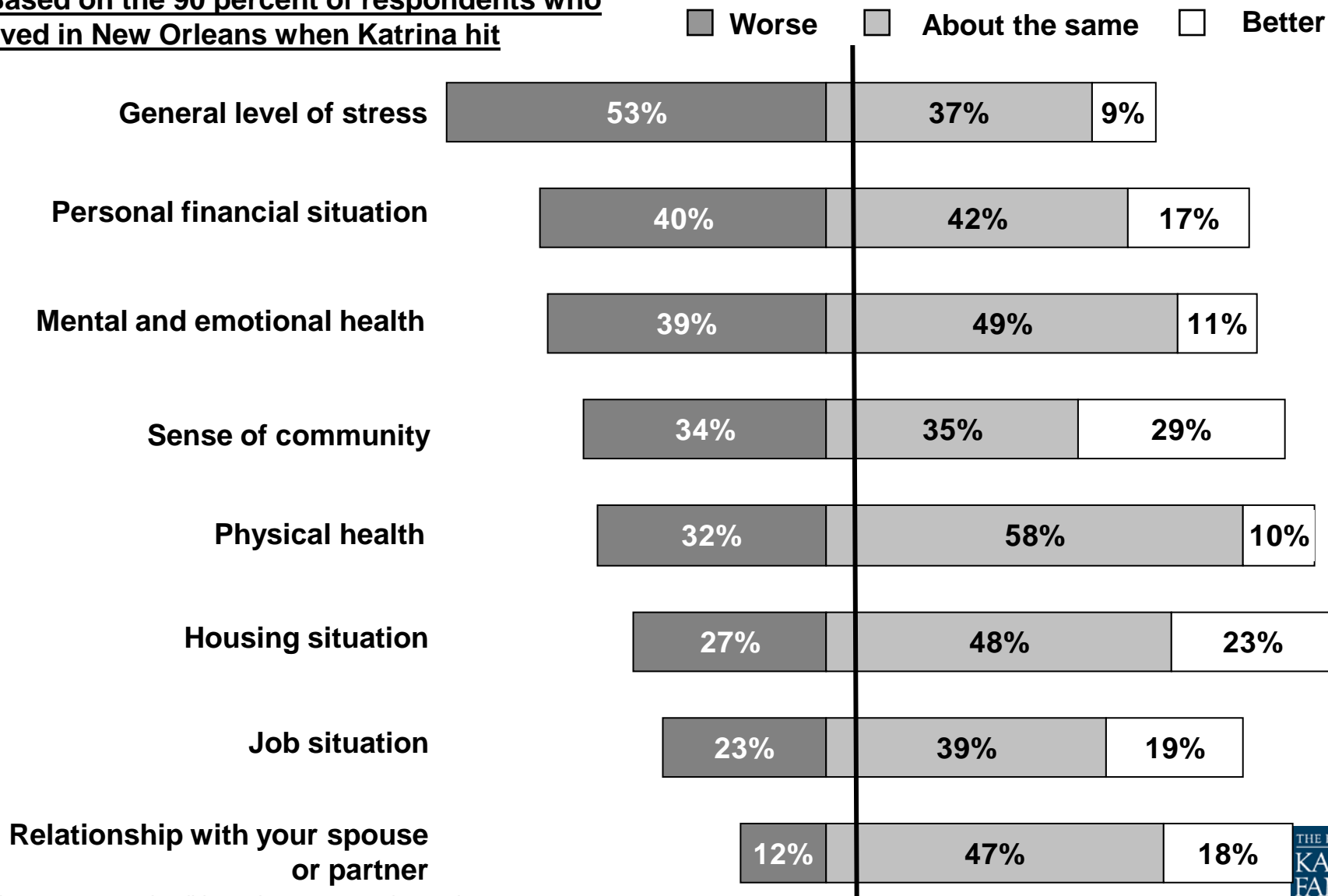
* Statistically significant difference at $p < 0.05$

Source: *New Orleans Three Years after the Storm: The Second Kaiser Post-Katrina Survey, 2008* (conducted March 5 – April 28, 2008)

New Orleans: Three Years Post-Katrina, 2008

Compared to before Hurricane Katrina, is each better, worse, or about the same today?

Based on the 90 percent of respondents who lived in New Orleans when Katrina hit

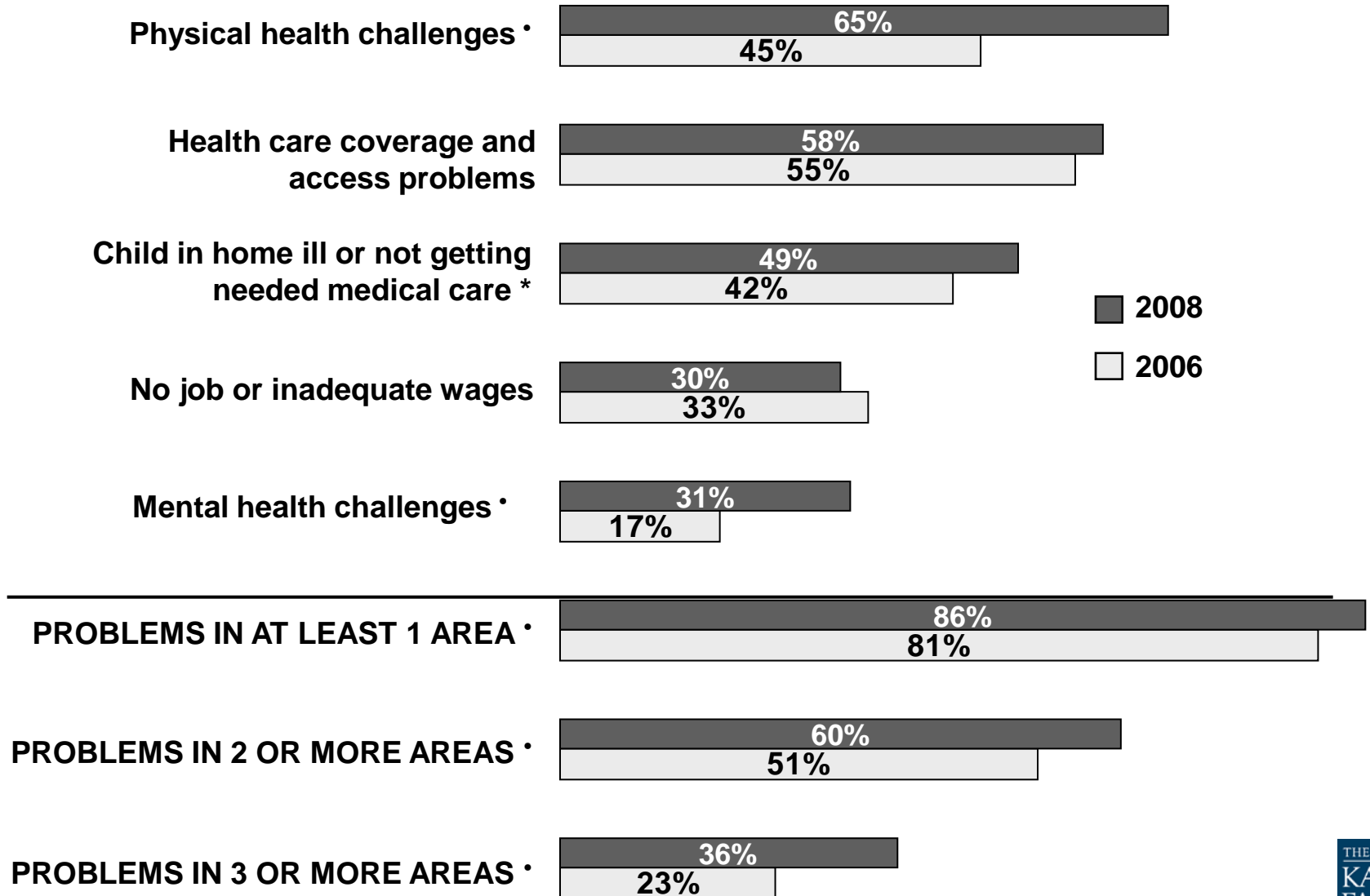


Note: The percentage who did not give an answer is not shown,

Source: *New Orleans Three Years after the Storm: The Second Kaiser Post-Katrina Survey, 2008* (conducted March 5 – April 28, 2008)

New Orleans: Three Years Post-Katrina, 2008

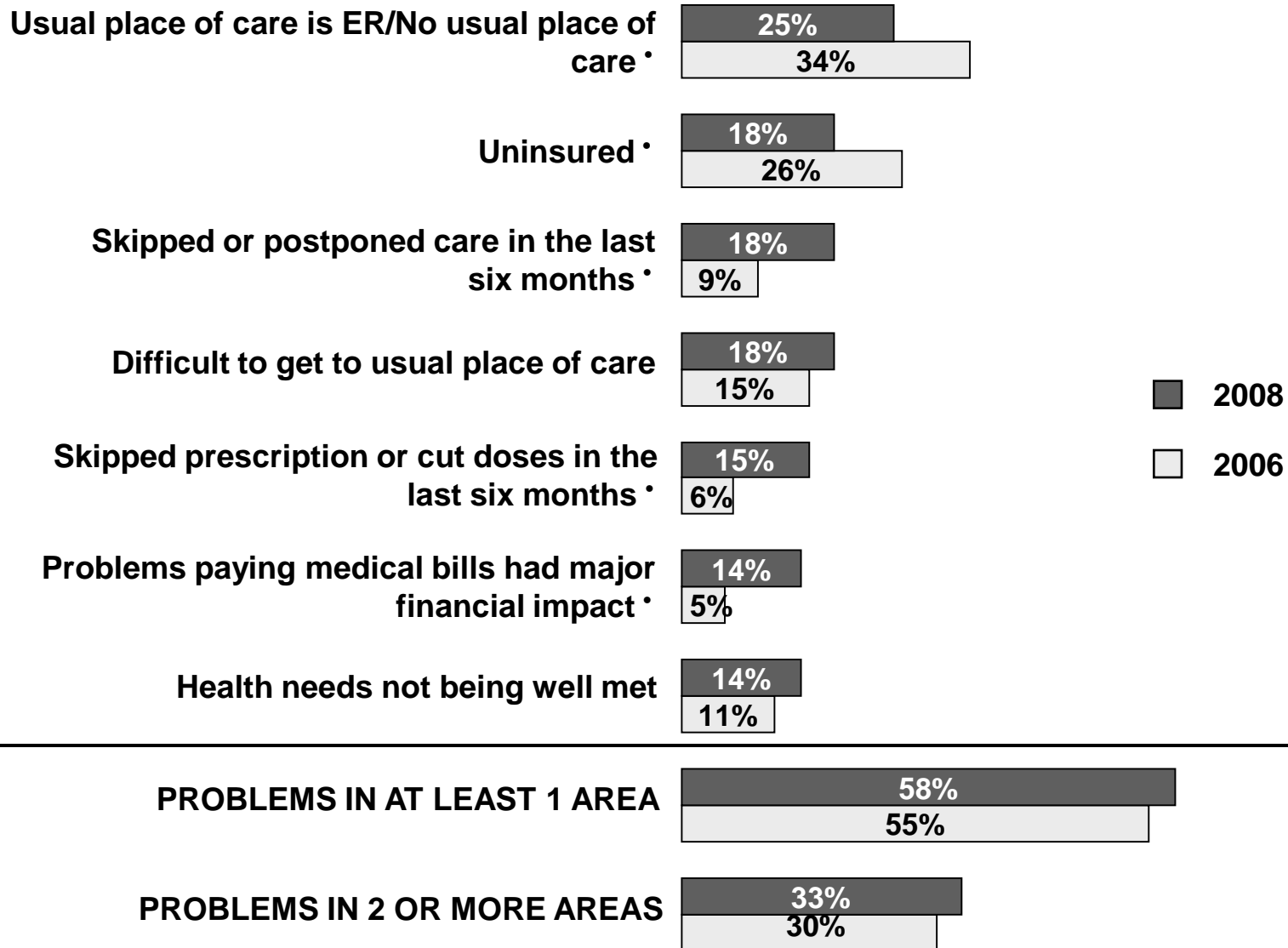
Percent who reported having a problem in each of the following areas:



* Among those with children in the home. • Statistically significant difference at p < 0.05

Source: *New Orleans Three Years after the Storm: The Second Kaiser Post-Katrina Survey, 2008* (conducted March 5 – April 28, 2008)

New Orleans: Three Years Post-Katrina, 2008



* Statistically significant difference at $p < 0.05$

Progress and Challenges

- **Restoring Hospital Capacity**
 - University Hospital reopened November 2006, other hospitals also open
 - Financial issues for some hospitals
 - Plans to build a teaching hospital to replace VA and Charity
- **Developing Community Clinics**
 - New clinics in response to need
 - \$100 million federal grant to support access to primary care (ending Sept. 2010)
- **Recruitment and retention of health professionals**
 - Incentive grants to recruit physicians and other workforce
 - Medical education
- **Increasing mental health capacity to meet population needs**
- **Health Coverage Expansions**
 - Plan for reform developed; some elements stalled by negotiations between stakeholders and transition in administration
 - LaCHIP expansion for children